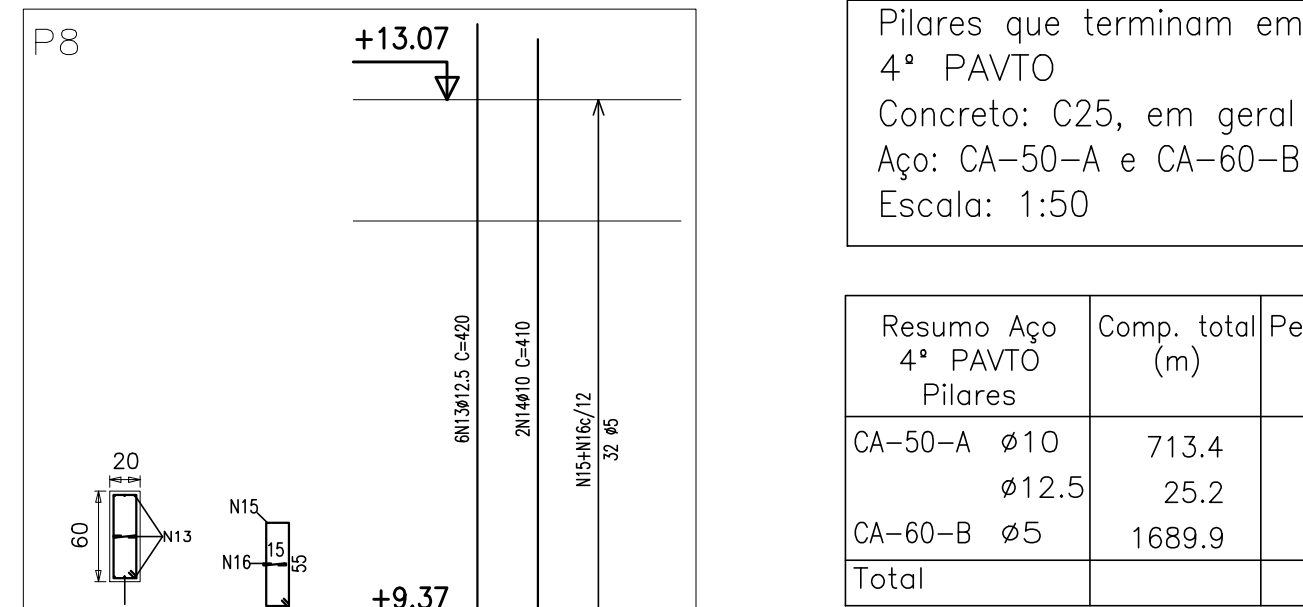


Diagrama de uma seção transversal de uma ponte com duas pistas de 3,50m cada, totalizando 7,00m de largura. O diagrama mostra a distribuição das pilhas (P1 a P8) e os eixos de referência (E1 a E8). A distância entre os eixos é de 13,07m. A largura da pista é de 3,50m. O diagrama também indica a altura da pilha (P1) e a distância entre os eixos (E1 a E8).

Elemento	Pos.	Diam. Q	Dob. Ret.	Dob. Comp.	Total	50-ALCA-60
						(kg)
P1+P2+P3+P4+P5+P6+P7+P8+P9+P10	2	5	35	152	258	16.9
	3	5	35	152	258	7.6
	4	5	35	152	258	1.5
	5	5	35	152	258	7.6
	6	5	35	152	258	1.5
	7	5	35	152	258	7.6
	8	5	35	152	258	1.5
	9	5	35	152	258	7.6
	10	5	35	152	258	1.5
	11	5	35	152	258	7.6
	12	5	35	152	258	1.5
	13	5	35	152	258	7.6
	14	5	35	152	258	1.5
	15	5	35	152	258	7.6
	16	5	35	152	258	1.5
	17	5	35	152	258	7.6
	18	5	35	152	258	1.5
	19	5	35	152	258	7.6
	20	5	35	152	258	1.5
	21	5	35	152	258	7.6
	22	5	35	152	258	1.5
	23	5	35	152	258	7.6
	24	5	35	152	258	1.5
	25	5	35	152	258	7.6
	26	5	35	152	258	1.5
	27	5	35	152	258	7.6
	28	5	35	152	258	1.5
	29	5	35	152	258	7.6
	30	5	35	152	258	1.5
	31	5	35	152	258	7.6
	32	5	35	152	258	1.5
	33	5	35	152	258	7.6
	34	5	35	152	258	1.5
	35	5	35	152	258	7.6
	36	5	35	152	258	1.5
	37	5	35	152	258	7.6
	38	5	35	152	258	1.5
	39	5	35	152	258	7.6
	40	5	35	152	258	1.5
	41	5	35	152	258	7.6
	42	5	35	152	258	1.5
	43	5	35	152	258	7.6
	44	5	35	152	258	1.5
	45	5	35	152	258	7.6
	46	5	35	152	258	1.5
	47	5	35	152	258	7.6
	48	5	35	152	258	1.5
	49	5	35	152	258	7.6
	50	5	35	152	258	1.5
	51	5	35	152	258	7.6
	52	5	35	152	258	1.5
	53	5	35	152	258	7.6
	54	5	35	152	258	1.5
	55	5	35	152	258	7.6
	56	5	35	152	258	1.5
	57	5	35	152	258	7.6
	58	5	35	152	258	1.5
	59	5	35	152	258	7.6
	60	5	35	152	258	1.5
	61	5	35	152	258	7.6
	62	5	35	152	258	1.5
	63	5	35	152	258	7.6
	64	5	35	152	258	1.5
	65	5	35	152	258	7.6
	66	5	35	152	258	1.5
	67	5	35	152	258	7.6
	68	5	35	152	258	1.5
	69	5	35	152	258	7.6
	70	5	35	152	258	1.5
	71	5	35	152	258	7.6
	72	5	35	152	258	1.5
	73	5	35	152	258	7.6
	74	5	35	152	258	1.5
	75					
				Total	1616	105.9
				Total	1616	105.9
				Total	1616	105.9
				Total	1616	105.9
				Total	1616	105.9
				Total	1616	105.9
				Total	1616	105.9
				Total	1616	105.9
				Total	1616	105.9
				Total	1616	105.9
				Total	1616	105.9
				Total	1616	105.9
				Total	1616	105.9
				Total	1616	105.9
				Total	1616	105.9
				Total	1616	105.9
				Total	1616	105.9
				Total	1616	105.9
				Total	1616	105.9
				Total	1616	105.9
				Total	1616	105.9
				Total	1616	105.9
				Total	1616	105.9
				Total	1616	105.9
				Total	1616	105.9
				Total	1616	105.9
				Total	1616	105.9
				Total	1616	105.9
				Total	1616	105.9
				Total	1616	105.9
				Total	1616	105.9
				Total	1616	105.9
				Total	1616	105.9
				Total	1616	105.9
				Total	1616	105.9
				Total	1616	105.9
				Total	1616	105.9
				Total	1616	105.9
				Total	1616	105.9
				Total	1616	105.9
				Total	1616	105.9
				Total	1616	105.9
				Total	1616	105.9
				Total	1616	105.9
				Total	1616	105.9
				Total	1616	105.9
				Total	1616	105.9
				Total	1616	105.9
				Total	1616	105.9
				Total	1616	105.9
				Total	1616	105.9
				Total	1616	105.9
				Total	1616	105.9
				Total	1616	105.9
				Total	1616	105.9
				Total	1616	105.9
				Total	1616	105.9
				Total	1616	105.9
				Total	1616	105.9
				Total	1616	105.9
				Total	1616	105.9
				Total	1616	105.9
				Total	1616	105.9
				Total	1616	105.9
				Total	1616	105.9
				Total	1616	105.9
				Total	1616	105.9
				Total	1616	105.9
				Total	1616	105.9
				Total	1616	105.9
				Total	1616	105.9
				Total	1616	105.9
				Total	1616	105.9
				Total	1	



<p><b>4° PAVTO</b>  Armadura transversal superior  Concreto: C25, em geral  CA-50-A e CA-60-B  Escala: 1:50</p>	<p><b>4° PAVTO</b>  Armadura longitudinal inferior  Concreto: C25, em geral  CA-50-A e CA-60-B  Escala: 1:50</p>
---	--

Resumo Aço 4° PAVTVO	Comp. total (m)	Peso+10% (kg)	Total
Armadura transversal superior			
CA-50-A	ø6,3 ø8	489,2 279,1	133 121
CA-60-B	ø4,2 ø5	42,0 1025,5	50 177
Total			436

Resumo Aço 4° PAVTVO	Comp. total (m)	Peso+10% (kg)	Total
Armadura longitudinal inferior			
CA-50-A	ø6,3 ø8	1667,7 195,3	453 80
CA-60-B	ø12,5 ø5	6,6 416,4	7 72
Total			612

Pranchas de referência: 17/64